

# PHILATELIC SHOW 2019

*An APS World Series of Philately Qualifying Event*



**Commemorating the Fiftieth Anniversary of the  
First Lunar Landing**



*Kelleher Auctions, LLC*  
AMERICA'S OLDEST PHILATELIC AUCTION HOUSE • ESTABLISHED 1885

Welcome to the Boxborough Philatelic Show!  
Please come visit us at our **Booth 21**.

### SEEKING, SELLING OR ENJOYING—

WE ARE YOUR BEST CHOICE.

#### SELLING YOUR COLLECTION

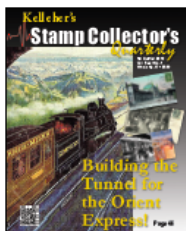
WE CAN MEET WITH YOU AT THE SHOW TO DISCUSS YOUR COLLECTION OR  
WE CAN ARRANGE A PRIVATE APPRAISAL AT YOUR HOME BY APPOINTMENT.

### CONSIGN OR SELL—

RECEIVE THE MARKET PRICE NOW! • OUTRIGHT PURCHASE FOR IMMEDIATE  
PAYMENT • AUCTION CONSIGNMENT • CASH ADVANCES • ASK ABOUT OUR  
GUARANTEED VALUE PROGRAM • PRIVATE TREATY

### SEEKING NEW STAMPS OR COVERS?

FREQUENT MAJOR PUBLIC AUCTION SALES INCLUDING SPECIALTY SALES,  
PLUS WEEKLY INTERNET SALES.



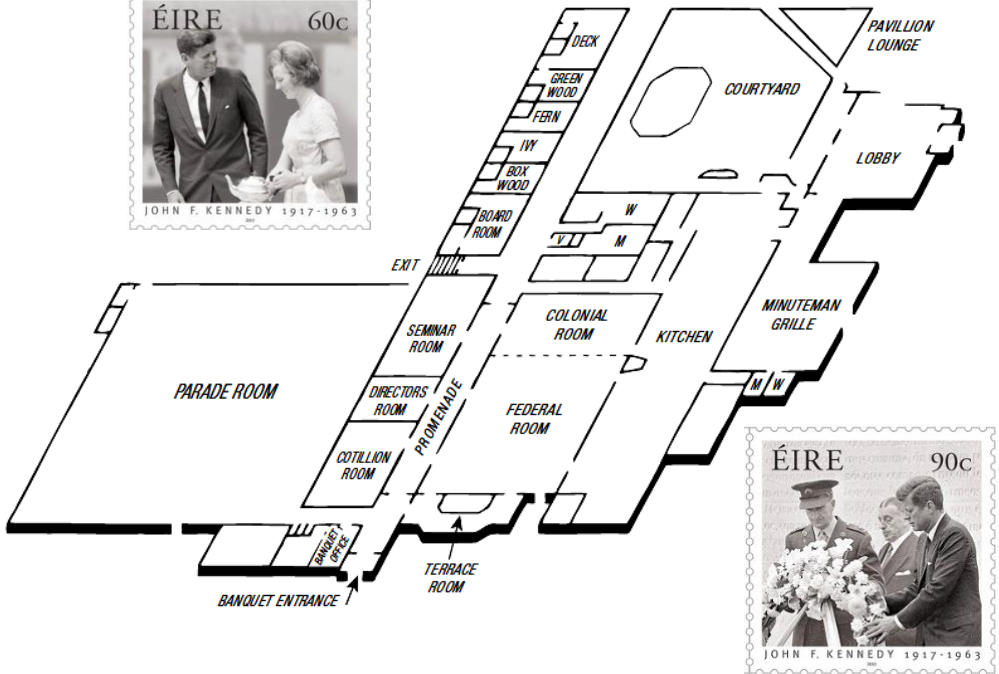
### ENJOYING YOUR COLLECTION?

STOP BY OUR BOOTH TO RECEIVE A FREE ISSUE OF THE  
STAMP COLLECTORS QUARTERLY AND OUR NEWEST  
FLAGSHIP AUCTION CATALOG.

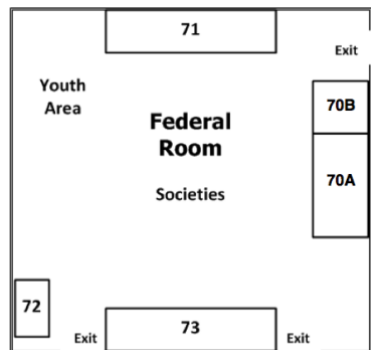
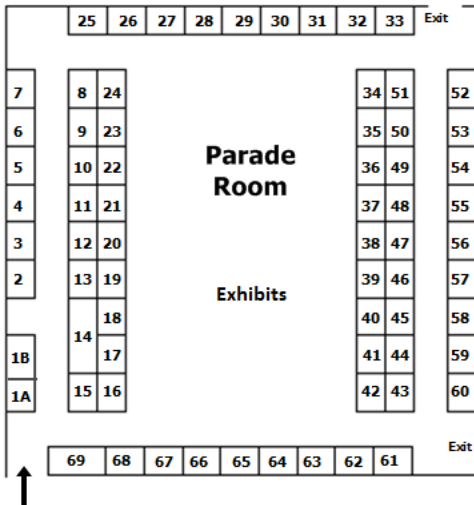
### DEAL LOCALLY • SELL GLOBALLY

203.830.2500 • 800.212.2830 • [info@kelleherauctions.com](mailto:info@kelleherauctions.com)  
22 Shelter Rock Ln., Unit 53 • Danbury, CT 06810  
[www.kelleherauctions.com](http://www.kelleherauctions.com)

# Hotel Map



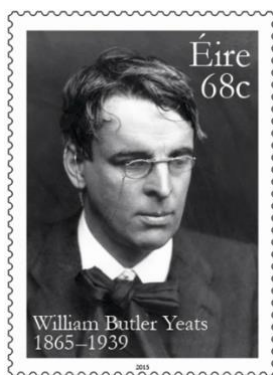
## Dealer Booth Locations



Gold Path (74) in Cotillion Room

## Dealers & Post Offices

- 1840-1950 Mostly Stamps (73)  
Albert's Stamps (22/23)  
Bergen Stamps & Collectables (34)  
Brunelle Stamps & Coin (31/32)  
Bush & Bush (70A)  
C & D Philatelics (30)  
Canterbury Stamps (52/53)  
Clark Frazier (18)  
Dave & Joni Allego (1A)  
Daniel F. Kelleher Auctions (21)  
Denny Peoples (6/7)  
Dick Smith Stamps (43)  
Don Tocher (63)  
Double J Stamps (1B)  
Doubleday Postal History (28/29)  
Doug Weisz Stamps & Covers (19)  
Dutch Country Auctions (66)  
Engler Stamps (37)  
Eric Jackson (3)  
Geezer's Tweezers (54/55)  
George E. Enstrom (11)  
Gil Fitton (35)  
Gold Path (74)  
Guy R Dillaway/Britannia Ltd (20)  
HJW Daugherty (Directors Room)  
Howard's Collectibles (44/45)  
Israel Philatelic Agency (Cotillion)  
J. Nalbandian, Inc. (2)  
Jim Taff (64)  
Labron Harris (15)  
Lawrence Lebel (17)  
Long Island Philatelics (9/10)  
Mark Reasoner (61)  
MCXI Philatelics (65)  
Miller's Stamp Company (14)  
Minerva Philately (70B)  
Mountainside Stamps (16)  
Nobelspirit (50/51)  
Nordica Post Offices (Cotillion)  
Dr. Paul G. Abajian (48)  
Perfect Perfs (60)  
PostalStationery.com (5)  
R.A. Houser Rare Stamps (33)  
REW Stamps-Coins, LLC (24)  
Robert S. Borden (4)  
Satchel Stamps (56)  
Sismondo Experts (26)  
South County Philatelics (40)  
Spellman Museum (67)  
Stampede Stamps (58/59)  
Stanley M. Piller & Assoc (62)  
Sterling Stamps (8)  
The Excelsior Collection (41/42)  
The Olde Paper Guy (47)  
Toga Associates (68/69)  
UNPA (Cotillion Room)  
USPS (Cotillion Room)  
Victoria Kunzer (49)  
Village Stamp & Coin (13)  
Volovski Rarities (25)  
Walter Kasell Enterprises (12)  
Wayne Gehret (71)  
William S. Langs (38)



# Dealer Specialties

<b>Specialty</b>	<b>Dealer</b>	<b>Booth</b>
<b>\$1 Covers</b>	Guy R. Dillaway/Britannia Ltd.	20
	Gold Path	74 - Cotillion
<b>Aero Philately</b>	Weisz Stamps & Covers	19
	Mountainside Stamps	16
<b>Asia</b>	REW Stamps-Coins, LLC	24
<b>Auctions</b>	H.J.W. Daugherty	Show Auction
	Daniel Kelleher Auctions	21
	Dutch Country Auctions	66
<b>Australia</b>	Toga Associates	68/69
<b>Austria</b>	REW Stamps-Coins, LLC	24
<b>Bermuda</b>	Toga Associates	68/69
<b>British Commonwealth</b>	Guy R. Dillaway	20
	<b>Postal History</b>	
	The Excelsior Collection	41/42
	Doubleday Postal History	28/29
<b>British Commonwealth</b>	<b>Stamps</b>	
	Mountainside Stamps	16
	Guy R. Dillaway/Britannia Ltd.	20
	South County Philatelics	40
	The Excelsior Collection	41/42
	MCXI Philatelics	65
	Toga Associates	68/69
1840-1950 Mostly Stamps	73	
<b>Canada&amp;Newfoundland</b>	J. Nalbandian, Inc.	2
	Long Island Philatelics	9/10
	Mountainside Stamps	16
	Perfect Perfs	60
	Toga Associates	68/69
	1840-1950 Mostly Stamps	73
<b>Canadian Revenues</b>	Eric Jackson	3
<b>Canadian Telegraphs</b>	Eric Jackson	3
<b>Christmas Seals</b>	Denny Peoples	6/7
<b>Cinderellas</b>	Denny Peoples	6/7
	Dave & Joni Allego	1A
	South County Philatelics	40
<b>Civil War</b>	Don Tocher, US Classics	63
<b>Collections &amp; Lots</b>	J. Nalbandian, Inc.	2
	Walter Kasell	12
	Village Stamp & Coin	13
	Dutch Country Auctions	66
	Bergen Stamps & Collectibles	34
	Excelsior Collection	41/42
	Victoria Kunzer	49
	Geezer's Tweezers	54/55
	Mark Reasoner	61
	Toga Associates	68/69

	Wayne Gehret	71
	1840-1950 Mostly Stamps	73
<b>Confederate States</b>	Miller's Stamp Company	14
	Stanley M. Piller & Assoc.	62
	Don Tocher, US Classics	63
<b>Covers</b>	Village Stamp & Coin	13
	Guy R. Dillaway	20
	C & D Philatelics	30
	Brunelle Stamps & Coins	31/32
	Bergen Stamps & Collectibles	34
	The Excelsior Collection	41/42
	Geezer's Tweezers	54/55
	Minerva Philately	70B
	Gold Path, Inc.	74
<b>Ephemera</b>	Denny Peoples	6/7
	Dave & Joni Allego	1A
	Gil Fitton	35
<b>European Stamps</b>	Mountainside Stamps	16
	REW Stamps-Coins, LLC	24
	South County Philatelics	40
<b>Flight Covers</b>	Weisz Stamps & Covers	19
	C & D Philatelics	30
<b>France</b>	REW Stamps-Coins, LLC	23/24
<b>German Areas &amp; PH</b>	Dave & Joni Allego	1A
	REW Stamps-Coins, LLC	24
	Howard's Collectibles	44/45
	Jim Taff	64
<b>Great Britain</b>	Toga Associates	68/69
<b>Hawaii</b>	Stanley M. Piller & Assoc.	62
<b>Maritime Mail</b>	Don Tocher, US Classics	63
<b>Military &amp; Naval PH</b>	Robert S. Borden	4
<b>Museums</b>	Cardinal Spellman Museum	67
<b>Naval Covers</b>	Weisz Stamps & Covers	19
	C & D Philatelics	30
<b>Newfoundland</b>	Long Island Philatelics	9/10
	Perfect Perfs	60
<b>New Issues</b>	Brunelle Stamps & Coins	31/32
<b>Philatelic Literature</b>	Double J Stamps	1B
	Guy R. Dillaway/Britannia Ltd.	20
	Cardinal Spellman Museum	67
<b>Picture Postcards</b>	Denny Peoples	6/7
	Dave & Joni Allego	1A
	Howard's Collectibles	44/45
	The Olde Paper Guy	47
<b>Poster Stamps</b>	Dave & Joni Allego	1A
<b>Propaganda Postcards</b>	Dave & Joni Allego	1A
	Jim Taff	64
<b>Retail Store</b>	Brunelle Stamps & Coins	31/32

<b>Scandinavia</b>	South County Philatelics	40
<b>Scandinavia–New Issues</b>	Nordica	Cotillion
<b>Souvenir Sheets</b>	Miller’s Stamp Co.	14
	Brunelle Stamps & Coins	31/32
<b>Space Covers</b>	C & D Philatelics	30
<b>Supplies</b>	Double J Stamps	1B
<b>Switzerland</b>	South County Philatelics	40
<b>Topical Stamps</b>	Canterbury Stamps	52/53
	Bush and Bush	70A
<b>United Nations</b>	Perfect Perfs	60
	UN Postal Administration	Cotillion
<b>U.S. Back of the Book</b>	Eric Jackson	3
	George Enstrom	11
	Miller’s Stamp Company	14
	Albert’s Stamps	22/23
<b>U. S. Classic Stamps</b>	J.Nalbandian, Inc.	2
	Walter Kasell	12
	Miller’s Stamp Company	14
	Volvoski Rarities	57/58
	Stanley M. Piller & Assoc.	62
<b>U.S. Coils/PNC’s</b>	Miller’s Stamp Co.	14
	Perfect Perfs	60
<b>U.S. Duck Stamps</b>	J. Nalbandian, Inc.	2
	Long Island Philatelics	9/10
	Miller’s Stamp Co.	14
<b>U.S. Errors</b>	J. Nalbandian, Inc.	2
	Miller’s Stamp Co.	14
<b>U.S. First Day Covers</b>	Weisz Stamps & Covers	19
	C & D Philatelics	30
	Bergen Stamps & Collectables	34
	The Excelsior Collection	41/42
	Geezer’s Tweezers	54/55
	Wayne Gehret	71
<b>U.S. Graded Material</b>	George Enstrom	11
	Walter Kasell	12
<b>U.S. Local Posts</b>	Eric Jackson	3
<b>U.S. Mint Sheets</b>	J. Nalbandian, Inc.	2
	Miller’s Stamp Company	14
	Wayne Gehret	71
<b>U.S. Plate Blocks</b>	Walter Kasell	12
	Miller’s Stamp Co.	14
	Mountainside Stamps	16
<b>U.S. Possessions</b>	Long Island Philatelics	9/10
<b>U.S. Possessions Revs.</b>	Eric Jackson	3

# WALPEX 2016

**Is coming to Boxborough!**

*53 Dealer Tables of  
Stamps, Covers & Supplies*

*Non-Competitive  
Exhibits*

**The Annual Fall Show of the  
Waltham Stamp Club**  
at the  
**Boxboro Regency Hotel &  
Conference Center**

**Saturday October 26, 10-6  
Sunday October 27 10-4**

*Show Covers with  
Custom Cancellations*

*Sunday Stamp  
Auction*

**Save the Date!**



<b>U.S. Postal History</b>	Postalstationery.com	5
	Denny Peoples	6/7
	Weisz Stamps & Covers	19
	Guy R. Dillaway/Britannia Ltd.	20
	C & D Philatelics	30
	Bergen Stamps & Collectables	34
	Gil Fitton	35
	The Excelsior Collection	41/42
	The Olde Paper Guy	47
	Doubleday Postal History	28/29
	Mark Reasoner	61
	Stanley M. Piller & Assoc.	62
	Don Tocher, U.S. Classics	63
	Labron Harris	15
<b>U. S. Postal Stationery</b>	Postalstationery.com	5
	Weisz Stamps & Covers	19
	Albert's Stamps	22/23
<b>U.S. Proofs &amp; Essays</b>	J. Nalbandian, Inc.	2
	Stanley M. Piller & Assoc.	62
<b>U.S. Revenues</b>	Eric Jackson	3
	Denny Peoples	6/7
	Walter Kasell	12
	Miller's Stamp Co.	14
	Lawrence LeBel	17
	Clark Philatelics	18
<b>U.S. RPO's</b>	Weisz Stamps & Covers	19
<b>U.S. Stamps</b>	J. Nalbandian, Inc.	2
	Long Island Philatelics	9/10
	George Enstrom	11
	Walter Kasell Ent.	12
	Village Stamp & Coin	13
	Miller's Stamp Company	14
	Mountainside Stamps	16
	Lawrence LeBel	17
	Albert's Stamps	22/23
	REW Stamps-Coins, LLC	24
	Bergen Stamps & Collectibles	34
	Engler Stamps	37
	South County Philatelics	40
	The Excelsior Collection	41/42
	Clark Philatelics	18
	The Olde Paper Guy	47
	Canterbury Stamps	52/53
	Volvoski Rarities	57/58
	William Langs	38
	Perfect Perfs	60
Mark Reasoner	61	
Jim Taff	64	

	1840-1950 Mostly Stamps	73
	Wayne Gehret	71
	Gold Path	74 - Cotillion
	USPS	Cotillion
<b>U.S. Telegraph Stamps</b>	Eric Jackson	3
<b>U.S. Stampless Covers</b>	Doubleday Postal History	28/29
<b>U.S. Zeppelins</b>	Miller's Stamp Company	14
<b>Western Europe &amp; Colonies Stamps</b>	MCXI Philatelics	65
	South County Philatelics	40
<b>WWII Postal History</b>	Don Tocher, U.S. Classics	63
<b>Worldwide PH</b>	Robert S. Borden	4
	Postalstationary.com	5
	Dave & Joni Allego	1A
	Guy R. Dillaway/Britannia Ltd.	20
	C & D Philatelics	30
	Bergen Stamps & Collectables	34
	Gil Fitton	35
	The Excelsior Collection	41/42
	Howard's Collectibles	44/45
	Doubleday Postal History	28/29
	Canterbury Stamps	52/53
	Geezer's Tweezers	54/55
	Mark Reasoner	61
	Labron Harris	15
	Minerva Philately	70B
	Gold Path	74 - Cotillion
<b>Worldwide Stamps</b>	Double J Stamps	1B
	J. Nalbandian, Inc.	2
	Dave & Joni Allego	1A
	Village Stamp & Coin	13
	Mountainside Stamps	16
	REW Stamps-Coins, LLC	24
	Brunelle Stamps & Coin	31/32
	Bergen Stamps & Collectibles	34
	The Excelsior Collection	41/42
	Canterbury Stamps	52/53
	Geezer's Tweezers	54/55
	Mark Reasoner	61
	Jim Taff	64
	MCXI Philatelics	65
	Toga Associates	68/69
	Bush and Bush	70A
	Minerva Philately	70B
	1840 – 1950 Mostly Stamps	73
	Gold Path	74 - Cotillion
<b>Zeppelin Stamps/Covers</b>	Miller's Stamp Company	14

# Exhibits

- 1-10 **Rarities from the Spellman Museum**  
11 **Boston 2026**  
12 **New Orleans in the Confederate Mail System / Doug Weisz**  
13-20 **US Embossed Revenue Stamped Paper 1755-1856 / Roger Brody**  
21-28 **United States Beer Stamps 1866-1919 / Louis Caprario**  
29 **Thomaston, Maine's 19th Century Fancy Cancels / Douglas N. & Nancy B. Clark**  
30 **US 1870 2¢ Jackson Bank Note: Model to Completed Design / Matthew W. Kewriga**  
31 **Study of Examiner Markings at the G.P.O. in NYC 1878-1883 / Wayne Schuetz**  
32 **Study of New York City Registered Labels 1883-1911 / Wayne Schuetz**  
33-40 **The State of the U.S. Mails - 1909 / Lawrence Haber**  
41-42 **Examiner Markings Study, Type EM-6 Used at the G.P.O. in NYC 1902-1920 / Wayne Schuetz**  
43-47 **US Civil Public Service Mail of the World War II Era / Stephen L. Suffet**  
48-52 **Martha's Vineyard Postal History / Douglas N. & Nancy B. Clark**  
53-60 **Americans in Space: Project Mercury, Gemini & Apollo / David S. Ball**  
61-66 **Newfoundland's 1897 Royal Family Issue and 1908 Map Stamp / Richard S. Wilson**  
67-72 **Pioneer Period Expeditions to Greenland / Hal Vogel**  
73-80 **Mexico - The Provisional Period 1867-68 / Marc E. Gonzales**  
81-90 **Mexico Airmail through 1939 / Stephen Reinhard**  
91 **North Atlantic Catapult, LZ127 and LZ129 Zeppelin Mail to and from Mexico / Stephen Reinhard**  
92 **Graf Zeppelin DLZ127 out of North Africa / Brian Callan**  
93-100 **Danish West Indies Foreign Mail to UPU / Matthew W. Kewriga**  
101-105 **Lady Gilbert-Carter, Designer of the Barbados One Penny Olive Blossom Stamp / Elizabeth W. Carter**  
106-110 **Westmeath 1830 to 1860 / Anthony Hughes**  
111-113 **Westmeath 1900 to 1925 / Anthony Hughes**  
114-118 **Life on the Lee - Postcard from River Lee, Cork City & Harbor 1900-22 / Brian Callan**  
119 **The Provisional Government of Ireland Dec 1921 to Dec 1922 / Robert Benninghoff**  
120 **Official Mail of Irish Provisional Government & Irish Free State / Raymond Murphy**  
121-125 **Irish Postal Stationery 1922 to 1983 / Brian Callan**  
126 **The e Watermark Definitive Coil Stamps of Ireland 1940-1970 / Robert Benninghoff**  
127 **Vox Hiberniae / Brian Harmon**  
128 **Great Britain's Greatest Irish Polar Expedition / Hal Vogel**  
129-136 **Winterhilfswerk - The Third Reich's Winter Relief Charity / Edwin J. Andrews**  
137-140 **The General Duty Revenue Stamps of Poland 1920-1924 / Edwin J. Andrews**  
141-145 **Postal History of Italian Social Republic / Seref Bornovali**  
146-147 **1933 Graf Zeppelin Italy Flight with Italy Mails / Daniele Fonsato**  
148-149 **Postcards from Portugal / Robert Benninghoff**  
150-157 **British India Queen Victoria Postal Stationery / Sandeep Jaswal**  
158 **The Dagger Issue of Bundi / Sandeep Jaswal**  
159 **The Portrait Issue of Dungarpur / Sandeep Jaswal**  
160 **Walter Quensell's Tin Can Mail Cachets / Brian Callan**  
161-168 **Development of Chinese Imperial Post Office 1897-99 / Sam Chiu**  
169 **Philatelic Celebrations of the Manned Balloon Mail / Frank Slack**  
170 **The 1908 US Christmas Seal - The First National Issue / Louis Caprario**  
171-175 **Christmas Traditions / John H. Fitzsimmons**  
176-179 **In the Name of the Lion / Greg Balagian**  
180 **P.H. Brennan Hand Delivery Service 1976-1978 / Douglas N. & Nancy B. Clark**

# Awards

## Open Competition

Grand Award   Reserve Grand Award  
Large Gold, Gold, Large Vermeil, Vermeil,  
Large Silver, Silver, Silver-Bronze, and Bronze Medals

## Single Frame Competition

Best in Show  
Large Gold, Gold, Large Vermeil, Vermeil,  
Large Silver, Silver, Silver-Bronze, and Bronze Medals

## Special Awards

American Airmail Society Best Aerophilatelic Award

### American Association of Philatelic Exhibitors:

Medal of Honor   Creativity Award   Sterling Award  
Encouragement Award   Two/Three Frame Awards

### American Philatelic Society Medals of Excellence:

Pre-1900   1900-1940   1940-1980   Post-1980

American Philatelic Society Research Medal

ATA First, Second, and Third Awards

APC Award   ARA Award   Auxiliary Markings Club Award

Christmas & Charity Seals Award   CC of Chicago Award   EPA Awards

EFO Society Award   Empire State Postal History Award

Machine Cancel Society Award   MAPS Turner Award   PHS Medal

USPSS Marcus White Award   US Cancellation Society Award

USSS Medal of Freedom

## Jury

*Ken Nilsestuen* of Ohio (Chief Judge)

*Colin Fraser* of New York

*Yamil Kouri* of Massachusetts

*Edwin G. Kroft* of British Columbia

*Steve Schumann* of California

## Show Committee

**Show Chair, Floor Manager & Security:** *Jeff Shapiro*  
**Asst Show Chair, Website & Program:** *Mark Butterline*  
**Exhibits Chair:** *Doug Clark*  
**Special Awards:** *Nancy Clark*  
**Bourse Chair:** *Chris Brouady*  
**Admissions Chair & Marketing:** *Jack Miller*  
**Show Cachet, Cancel & Card Designer:** *Chris Calle*  
**Youth Activities Chair:** *Jay Paton*

## Philatelic Show 2018 Youth Volunteers

*Dave Sawyer, Jay Paton*

## Philatelic Show 2018

### Admissions Volunteers

*Tim O'Shea, Stephen Tauber, Chris Brouady, Dave Kent,  
Len Andexler, Norm Shufrin, Jeff Bingham, Rick Robinson,  
Cliff Irving, Dave DuBois, Joe Signor, Dave Libby, Linda Gilmore,  
Walter Paton, Jack Miller*

## Convening Societies

**American Association of Philatelic Exhibitors**

**Canal Zone Study Group**

**Eire Philatelic Association**

**Massachusetts Postal Research Society**

**Metropolitan Airpost Society**

**New Hampshire Postal History Society**

**Rhode Island Philatelic Society**

**Universal Ship Cancellation Society - Old Ironsides Chapter**

**Universal Ship Cancellation Society - U.S.S. Nathan Hale Chapter**

**Waltham Stamp Club**



# Schedule of Events

## Thursday – Show Setup Day

8:30AM-4:30PM	Postal History Symposium – Mexican Wars	Spellman Museum
3PM-5PM	WALPEX Floor Planning (Closed)	Colonial Room

## Friday – Show Hours: 10AM to 6PM

10AM-6PM	Jury Office (Closed)	Board Room
10AM-6PM	Viewing of Auction Material	Directors Room

## Saturday – Show Hours: 10AM to 5PM

10AM-6PM	Jury Office (Closed)	Board Room
10AM-1:30PM	Viewing of Auction Material	Directors Room
11AM-Noon	New Hampshire Postal History Society Meeting	Boxwood Room
Noon-1PM	Canal Zone Study Group Membership Meeting	Ivy Room
12:30PM-2:30PM	EPA General Meeting	Deck Room
1PM-3PM	MAPS General Meeting	Fern Room
1:30PM-5PM	Auction - Hugh Daugherty	Seminar Room
2:30PM-3:30PM	AAPE Meeting - Open Forum on Exhibiting	Deck Room
3:30PM-5PM	Judges Critique	Deck Room
6PM Start	Cash Bar	Colonial Room
6:30PM Start	Show Banquet & Guided Tour ( <b>ticket required</b> )	Colonial Room

## Sunday – Show Hours: 10AM to 3PM

11AM-1PM	Massachusetts Postal Research Society Meeting	Ivy Room
Noon-2PM	Universal Ship Cancellation Society Meeting	Fern Room
1PM-2PM	United Stamp Society Meeting	Deck Room
1PM-3PM	Annual Meeting – NE Federation of Stamp Clubs	Board Room

## Show Banquet

**Three Course Buffet with Carving Station & Dessert Table in the Colonial Room (next to Federal Room)**



**Only \$35/person!**  
**Cash Bar - Saturday @ 6 PM**  
**Dinner – Saturday @ 6:30PM**  
**Tour of the Exhibits after the Dinner**



**Ticket absolutely and positively required! Be there, or be square!**  
**Obtain tickets from Nancy Clark at the Spellman Museum booth**

# IRELAND

Do you collect stamps of Ireland? If the answer is yes, then you should consider joining our fine society which specializes in all aspects Of Irish philately.

## Éire Philatelic Association

- Annual meetings
- Quarterly Journal
- Chapter Meetings
- Auctions

For more information visit our website:  
<http://eirephilatelicassoc.org/>  
or contact our secretary, John B. Sharkey,  
Secretary, 1559 Grouse Lane  
Mountainside, NJ 07092-1340  
E-mail address: [jsharkeyepa@me.com](mailto:jsharkeyepa@me.com)



# HUGH M. CLARK

## RARE POSTAGE STAMPS SINCE 1965

UNITED STATES

BRITISH COMMONWEALTH

WORLD WIDE



All of the above items are currently in stock!

Please visit of us at **Booth # 58/59**

Please Remember that "Rare" does not Always Mean Expensive!!

Specialized Materials Include Varieties and Cancels/Postmarks  
Postal History Also Available!

I can be reached at: [25stampede@verizon.net](mailto:25stampede@verizon.net)