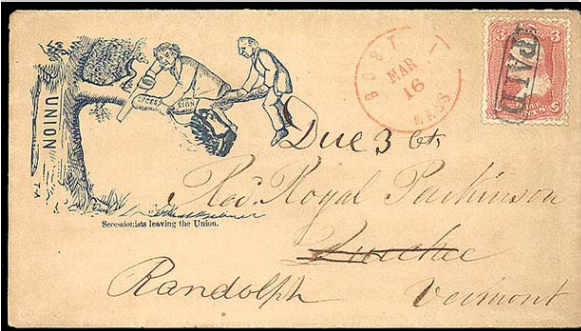


## Welcome to the Massachusetts Postal Research Society

Stamp collecting is the accumulation of material related to the payment of postage and the carriage of the mails.



In addition to traditional postage stamps, many philatelists - a fancy word for stamp collectors—also collect covers (envelopes that carried mail). Some individuals also collect markings or labels applied to mail including postage meters.



The Massachusetts Postal Research Society offers collectors interested in the Bay State and its' history to collaborate, collect, and share the philatelic artifacts of Massachusetts. The state offers in incredible range of opportunities to specialize in specific areas or collect in general areas.

With research materials published and maintained by the society, members can collect by post office, county, geographic region, or topic. Members can share and exhibit materials freely in this rich and collaborative community.

## Benefits of Membership:

### *The Massachusetts Spy*

The Massachusetts Spy is the regularly published newsletter of the Massachusetts Postal Research Society. Published four times annually, each issue brings with it a new exploration of postal history as it relates to the Bay State. Topics explored often cover recent discoveries and little known facts regarding post offices, cancels, and postal markings in general.

### *Rarity Survey*

The Society continues to expand its census and rarity survey data for the harder to find post offices and stations in Massachusetts. Membership allows participants to share in the census and gain insight to data as it is gathered and published



### *Annual Meetings*

Meeting like-minded specialist collectors can often be difficult. Society members meet typically at least once a year, normally at the New England Federation of Stamp Clubs show in Boxboro, MA



**Massachusetts Postal Research Society**  
c/o H. Daugherty  
P.O. Box 1146 Eastham, MA  
02642



# The Massachusetts Postal Research Society



A Chapter of the American Philatelic Society

### *A Fun, Safe Family Activity*

Stamp collecting and postal history collecting does not have to be a hobby for old codgers! It's a great way to interest young people in a hobby that does not require video game subscriptions and hours dedicated to the internet. Start your own "Antiques Roadshow" event at your next local stamp club or search for items that compliment a homework assignment, book report, or science project!

How about starting a unique Massachusetts "Rock and Roll" collection?



A modern Grateful Dead ticket sales all over decorated cover with a postmark from Boston, MA fits well with a 1930's era Plymouth Rock 1620 advertising cover postmarked from Assonet, Massachusetts. What else can you find to add to this collection? Finding new items can be fun, rewarding, and inexpensive too!

### *Beginnings of the Society*

Dedicated to the study of Massachusetts postal history from colonial times to modern mail delivery techniques, the Society was founded in 1975 as the Massachusetts Postal Research League.



The Society has expanded and contracted over it's history in keeping with trends in the overall philatelic space, but the group continues to be active in the Massachusetts postal realm, as well as other philatelic societies.



Our history includes a proud legacy of publications of the Society's newsletter "The Massachusetts Spy". The first issue of The Spy came out in May 1975 as the Massachusetts Postal Research League Bulletin.

### *Meeting Locations*

The group generally meets on an annual basis, but members often gather informally at stamp shows across the country to exchange material and collaborate on historical research.

### **Application for Membership**

I hereby apply for membership in the Massachusetts Postal Research Society and remit dues for the current fiscal year. Membership dues are \$10 per year for individuals and family.

Name: \_\_\_\_\_  
 Address: \_\_\_\_\_  
 \_\_\_\_\_  
 City: \_\_\_\_\_  
 State: \_\_\_\_\_ Zip Code: \_\_\_\_\_

How did you hear about the Society:

Collecting Interests:

Other Philatelic Memberships:

Signature of Applicant: \_\_\_\_\_

Date: \_\_\_\_\_

Make Checks Payable to:  
**Mass Postal Research Society**  
 Mail Completed Form to:  
**Hugh J. W. Daugherty**  
**Post Office Box 1146**  
**Eastham, MA 02642**

***For Official Use Only:***  
 Sponsor: *Maass PRS Membership Chair*  
 Date of First Reading: \_\_\_\_\_  
 Date Elected to Membership: \_\_\_\_\_  
 Membership No.: \_\_\_\_\_